



College of Agriculture, Health and Natural Resources

DEPARTMENT OF ALLIED HEALTH SCIENCES



Koons Hall
Home of Allied Health Sciences

Welcome!

What's Covered in this presentation?



- Meet with your academic advisor
- Review the Allied Health Sciences major
- Introduction to what you will/can study
- Important registration information
- Review what we know about your academics
- Course schedule planning

Advising Center advisors:



Storrs Campus Advisors:



Adeleye Adaralegbe, PhD
Academic Advisor/Lecturer



Paul Bureau M.S., CIH
Academic Advisor/Lecturer



Susan Gregoire, PhD, RRT
Advising Center Director/Lecturer



Cheryl Eckert, M.S
Academic Advisor/Lecturer



Amy McKeon, M.A.
Academic Advisor



Lauren Wilson M.A., DLM, ASCP(CG)(MB)
Academic Advisor/Lecturer



Tamara Kaliszewski, MSHS, PA
Academic Advisor/Lecturer
Waterbury Campus



Janet Rochester, M.S.
Academic Advisor/Lecturer

Academic Center website: <https://alliedhealth.uconn.edu/advising/>

Academic Advising



- Advisors have varied backgrounds and expertise to promote high student success!
 - Allied Health Sciences major advisor stays with you throughout 4 years
 - New advisor assigned within DIET, DGS, and MLS if admitted to those programs
 - Honor students advised by honors core and thesis advisors

Academic Advising Center



- Communication:
 - ✦ Orientation – WebEx invitation
 - ✦ Schedule appointment – NEXUS (Active beginning Spring 2021)
 - ✦ Open (drop-in) advising – suspended for Spring 2021
 - ✦ Phone advising
 - ✦ Email advising
 - ✦ Advising Center (AlliedHealthAdvising@uconn.edu)
- FERPA (Family Educational Rights and Privacy Act) applies !!

Department of Allied Health Sciences ○ Majors

- Allied Health Sciences (AHS)
 - Including concentrations in.....
 - ✦ Health Sciences
 - ✦ Healthcare Administration
 - ✦ Public Health and Health Promotion
 - ✦ Occupational & Environmental Health & Safety
- Diagnostic Genetic Sciences (DGS)
- Dietetics (Coordinated Program) (DIET)
- Medical Laboratory Sciences (MLS)

Allied Health Sciences



- Designed for students interested in health-related careers in **preparation for *graduate* health education** programs that require a baccalaureate degree for admission or for those seeking **employment** following graduation.
- Students may further define their major with a concentration in Health Sciences, Public Health & Health Promotion, Healthcare Administration, or Occupational & Environmental Health and Safety

Concentrations



➤ ALLIED HEALTH SCIENCES (no concentration)

- ✓ broad training, flexible, tailored
- ✓ Physician Assistant, Accelerated Bachelors in Nursing, Physical Therapy, Occupational Therapy, etc.

➤ HEALTH SCIENCES

- ✓ laboratory or diagnostic procedures, strong health science and pathology background
- ✓ Medicine, Dentistry, Pharmacy, Optometry, Chiropractic care, AHS's Masters in Healthcare Genomics, post-baccalaureate certificate programs in Diagnostic Genetics Sciences or Medical Laboratory Sciences, etc.

Concentrations



➤ HEALTHCARE ADMINISTRATION

- ✓ Administration, managerial, government agencies, insurance companies
- ✓ Health Administration, Health Insurance Studies, Health Policy and Law, and others

➤ PUBLIC HEALTH AND HEALTH PROMOTION

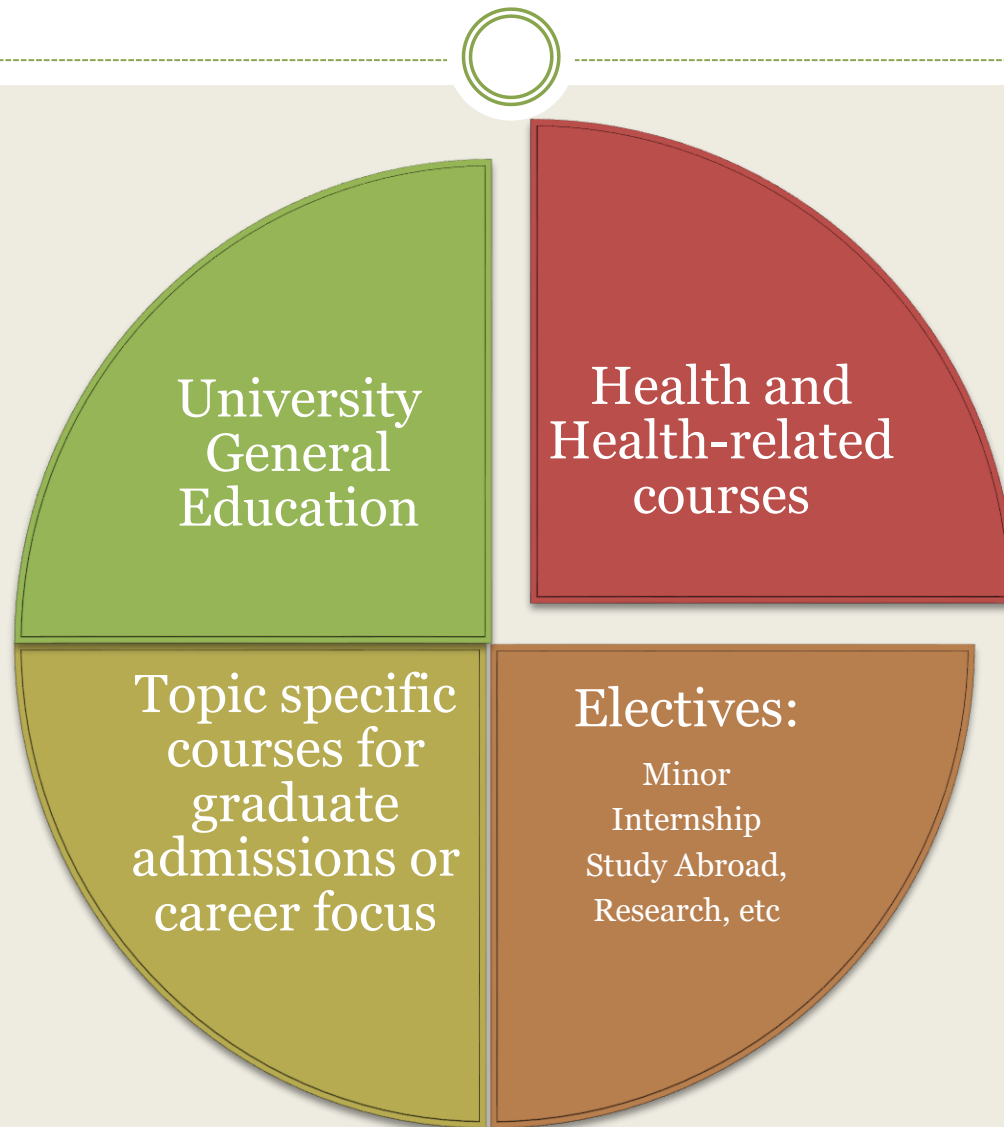
- ✓ social service agencies, worksite health promotion programs, government health agencies, wellness programs, business, industry or educational settings
- ✓ Masters in Health Promotion, Public Health, Biostatistics, Gerontology, Health Education, Epidemiology, Health Psychology, Global/International Health, etc.

Concentrations



- OCCUPATIONAL AND ENVIRONMENTAL HEALTH AND SAFETY
 - ✓ enhance safe work conditions, minimize disease and injuries, identify, evaluate, control and communicate health and safety hazards, promote healthy and safer working conditions
 - ✓ Environmental Health Sciences, Occupational Safety & Health, Industrial Hygiene, Ergonomics, Risk Management, etc.

What will I take for courses?



Collaborative Opportunities



Additional degree with:

- Environmental Studies
- Nutritional Sciences
- Pathobiology
- Psychology
- Molecular & Cell Biology
- Physiology & Neurobiology

Extracurricular Opportunities:

- Honors program
- Internships
- Independent Study
- Research
- Study Abroad

Encourage....

- Clubs
- Community Service
- Athletic participation

Minors in:

- Biology/ Molecular & Cell/ Anatomy & Physiology
- Healthcare Management & Insurance Studies
- Cultural Studies
- Gerontology
- Human Development & Family Studies
- International Studies/ Human Rights
- Nutrition for Exercise and Sport
- Political Science
- Psychological Sciences
- Sociology
- Women's, Gender and Sexuality

Academic information we will have prior to your advising session

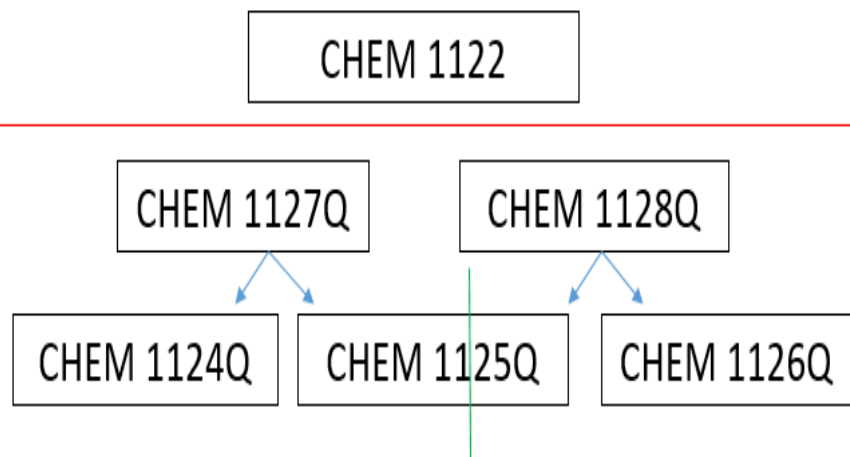


- High school courses
- Early College Experience (ECE) credits
- Advanced Placement (AP) credits
- Language completed (3+ years of same language)
- Chemistry Placement Exam (CPE)
- Math Placement Exam (MPE)

Placement Exams

Chemistry Placement

- Chem level determined by CPE and career track
- ❖ < 90: 1124Q, 1125Q and 1126Q
- ❖ > 90: 1127Q and 1128Q



Math Placement

- Math level taken is determined by MPE and career track
- ❖ >17: MATH 1060Q (Pre-calculus)
- ❖ >22: Math 1131Q (Calculus)

What will my advisor talk with me about?



- Advisor will:
 - Confirm your career interests
 - Review what we know about you.....
 - ✦ MPE, CPE, AP, ECE.... confirm with your advisor.
 - ✦ Are we missing anything... let us know!
 - ✦ Confirm chemistry and math level of interest
 - ✦ Review of pre-registered courses.
 - Discuss remaining options for course registration

IMPORTANT WEBSITES

UConn Advising

<http://advising.uconn.edu/>

Allied Health Advising Center

<https://alliedhealth.uconn.edu/advising/>

CAHNR Orientation Information

<http://grow.uconn.edu/orientation/>

Class Registration and Helpful Hints

<https://alliedhealth.uconn.edu/wp-content/uploads/sites/2408/2018/05/Class-Registration-Helpful-Hints.pdf>

Forms and Procedures

<http://grow.uconn.edu/forms/>

Extracurricular Experiences

<https://alliedhealth.uconn.edu/undergrad/ahsmajor/extracurricular/>

Major Course Planning

<https://alliedhealth.uconn.edu/undergrad/sample-course-sequences/>

Questions and Answers



Email your advisor or contact the Advising Center
at alliedhealthadvising@uconn.edu